



# IB Basics Parent Session

## A Broad, Balanced, Conceptual and Connected Curriculum

# IB Programmes

---

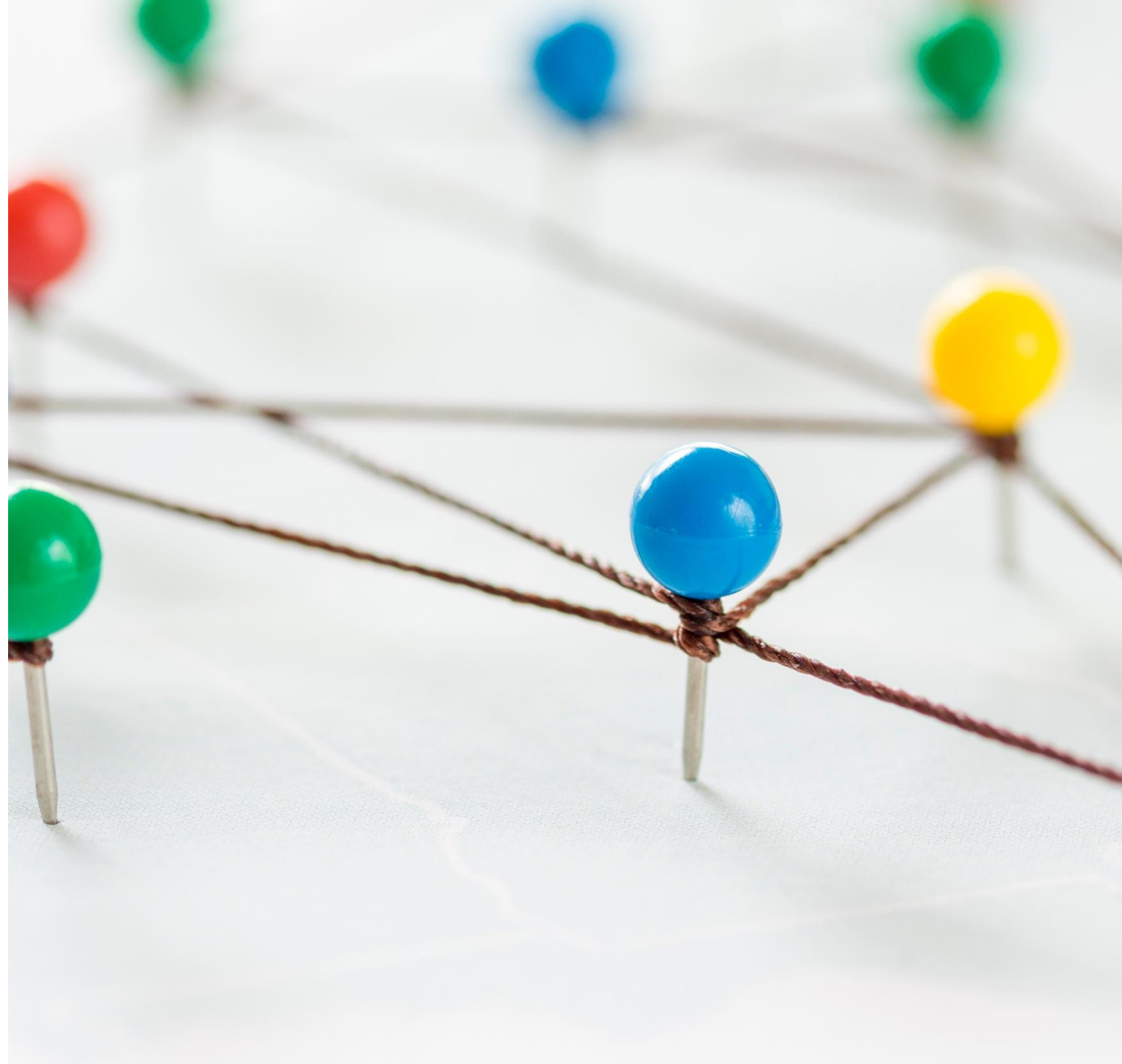
- Primary Years (PYP)
- Middle Years (MYP)
- Diploma (DP)
- Career-Related (CP)



Each IB programme provides a detailed and developmentally appropriate curriculum or curriculum framework that is broad, balanced, conceptual and connected.

# Importance of Making Connections

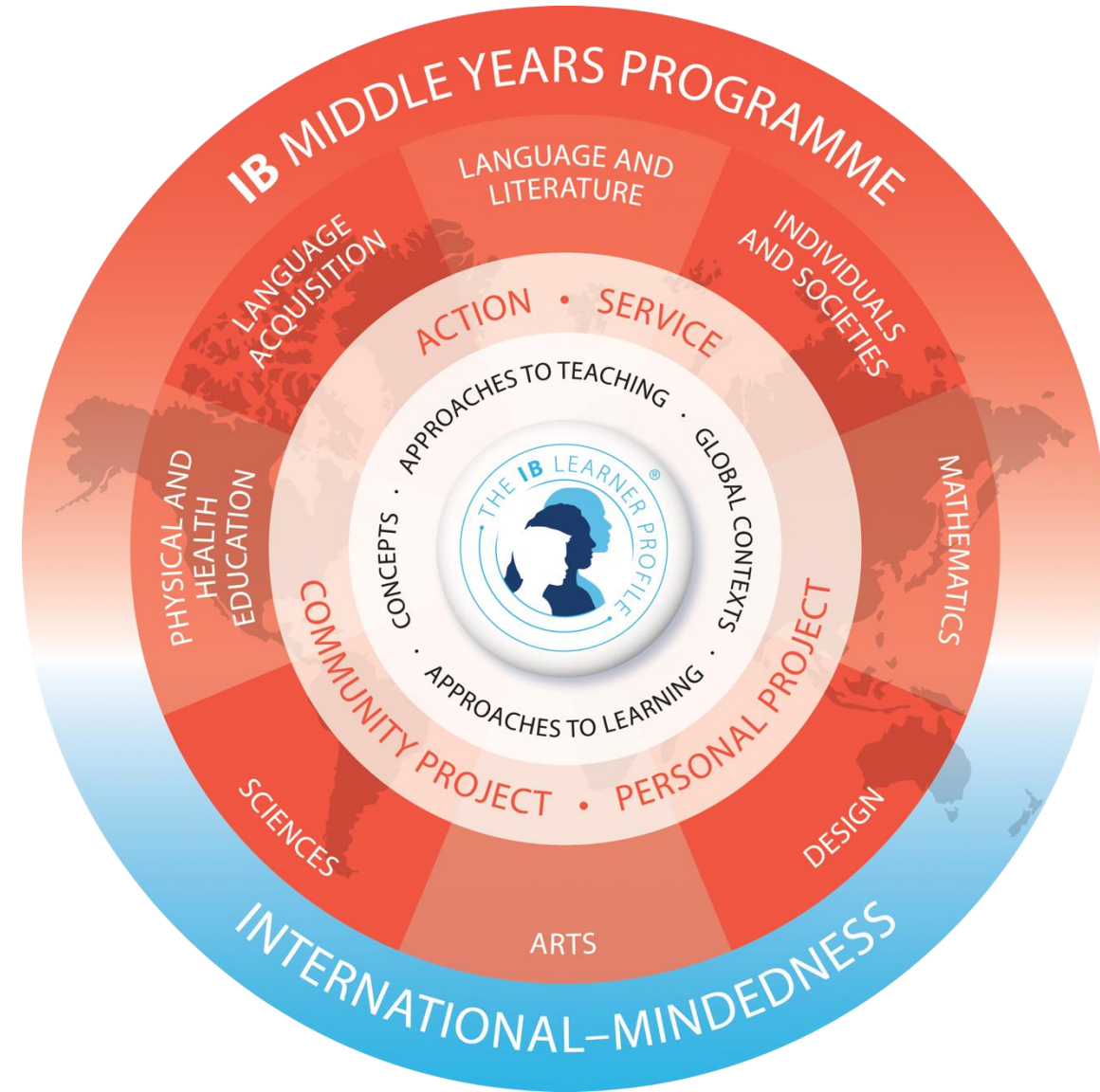
- Explore the relationships between academic disciplines
- Learning about the world in ways that reach beyond the scope of individual subjects
- Focus on offering students authentic opportunities to connect learning to the world around them



# IB is a Curriculum Framework

---

- **Walker is a Florida School**
  - *We teach the Florida State Standards*
- **Walker is a Hillsborough County Public School**
  - *We use the HCPS Curriculum Guides to pace our studies*
- **Walker is an IB Middle Years Programme School**
  - *We use the MYP Curriculum Framework to design our IB Units that guides how we teach*



# Shared focus on International Mindedness & IB Learner Profile



**PYP** Students explore 6 **Transdisciplinary Themes of Global Significance:**

who we are

where we are in place and time

how we express ourselves

how the world works

how we organize ourselves

sharing the planet

**MYP** Students explore 6 **Global Contexts:**

identities & relationships

personal & cultural expression

orientation in space & time

scientific & technical innovation

fairness & development

globalization & sustainability



# Shared focus on International Mindedness & IB Learner Profile



**DP** curriculum consists of 6 subject groups and 3 elements of the DP core. One of the core elements is the Theory of Knowledge (TOK) course encourages students to become more aware of their own perspectives and assumptions through an exploration of the fundamental question of how we know what we know.

**CP** Students combine the DP courses with career related studies and the four elements of the CP core. As one of these core elements, the personal and professional skills course focuses on preparing students to effectively navigate a range of personal and professional situations that they may encounter in the workplace.

# Culminating Projects

---

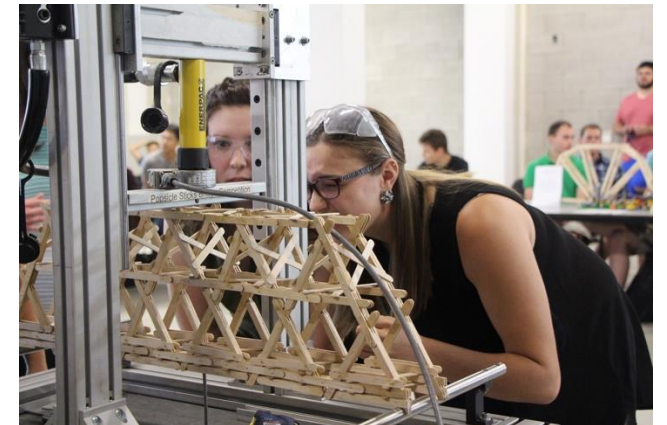
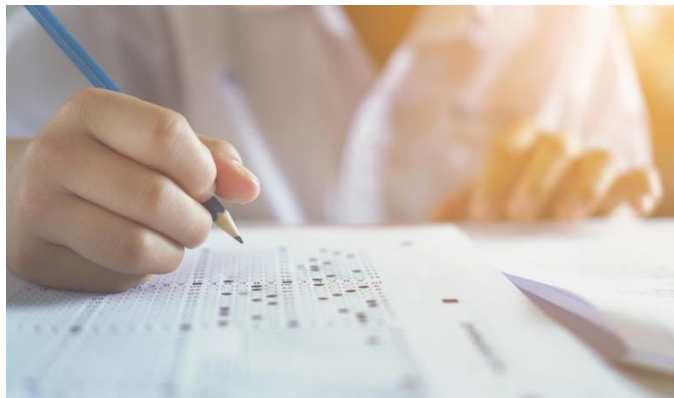
- **PYP** Exhibition
- **MYP** Community Project
- **DP** Extended Essay
- **CP** Reflective Project

These projects provide an opportunity for students to both deepen and showcase their knowledge, understandings and skills, and to celebrate their learning journeys



# Meaningful Assessments

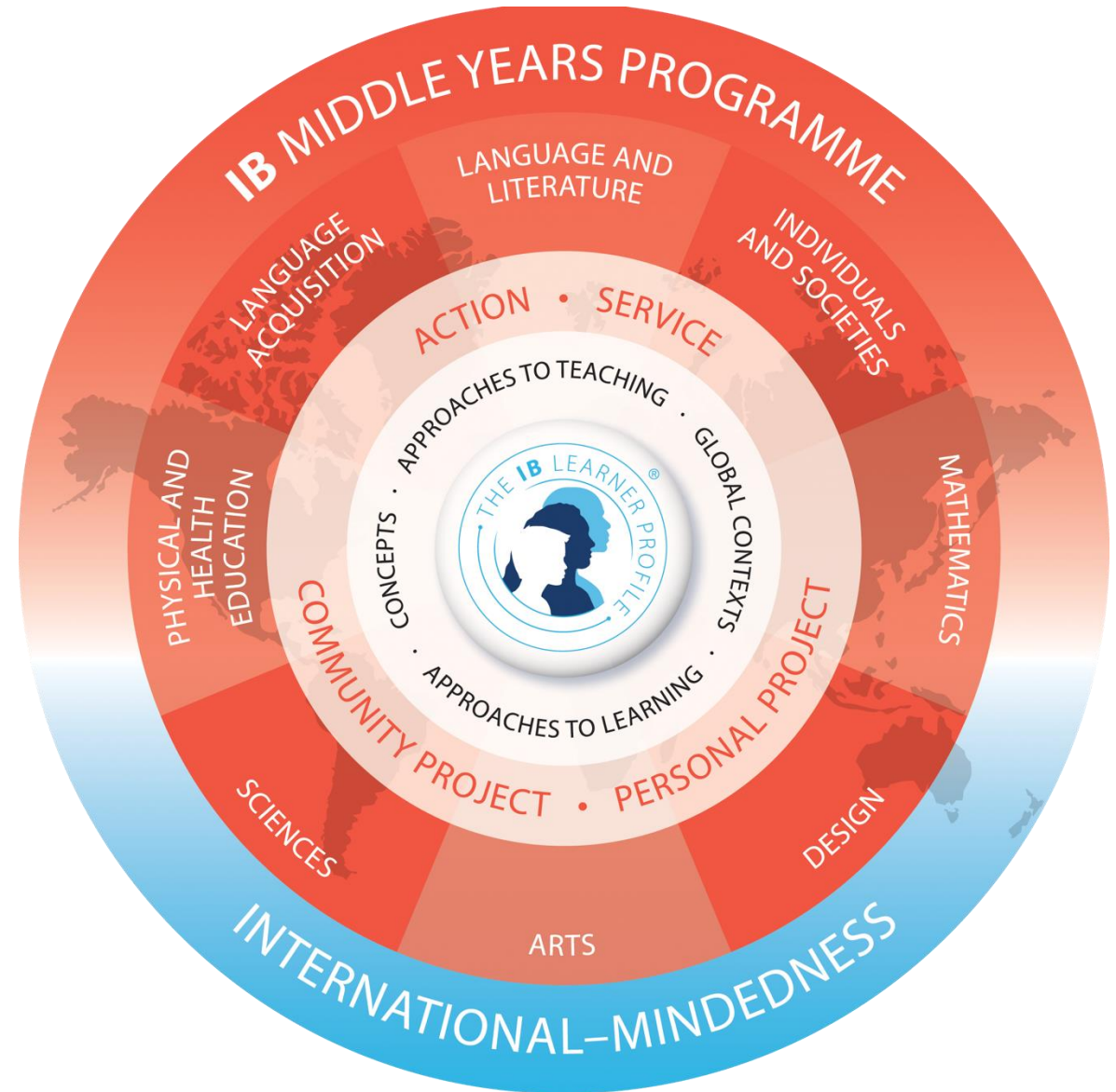
- Supports curricular goals; ongoing, varied, integral to the curriculum
- Range of strategies and tools to assess student learning
- Emphasis is placed on the importance of analyzing assessment data to inform teaching and learning
- Students benefit by learning how to assess their own work and the work of others
- Rigorous assessments provide assessment tasks that require students to demonstrate higher-order thinking rather than simple, factual recall.
- These rigorous assessments help to maintain the IB's hard-earned reputation for high standards and challenging programmes.





# MYP Required Subjects

- Mathematics
- Sciences
- Language and Literature
- Language Acquisition
- Individuals and Societies
- Physical and Health Education
- Arts
- Design



# IB (HCPS) Terms

---



- Mathematics (Math)
- Sciences (Science)
- Language and Literature (English/Reading)
- Language Acquisition (French & Spanish)
- Individuals and Societies (Social Studies)
- Physical and Health Education (PE)
- Arts (Electives)
- Design (IB Design)

# Arts - Electives

---

In the International Baccalaureate Middle Years Programme (IB MYP), students develop through creating, performing and presenting arts in ways that engage and convey feelings, experiences and ideas.

At Walker, we take a new perspective on traditional electives and focus on how they fit into the categories of performance and visual arts. Students have opportunities to function as artists, as well as learners of the arts.

- Agriculture
- Art
- Band
- Computer/Technology
- Culinary
- Orchestra
- Robotics
- Yearbook



# Design

- Year 1 (6<sup>th</sup> grade)
  - Incorporated into Earth & Space Science
    - STEM Research Projects – IB Design Cycle Projects
- Year 2 (7<sup>th</sup> grade)
  - Computer Applications in Business
    - IB Design Cycle Projects
- Year 3 (8<sup>th</sup> grade)
  - Computer Applications in Business 4
    - IB Design Cycle Projects
    - Community Service Project Guidance







A Worldwide  
Community of  
Educators

One of the most special features of the IB is that it gathers together a worldwide community of educators who share a common belief that education can help to build a better world



# An IB Education

---

- Is designed to develop inquiring, knowledgeable and caring young people who will help to create a better and more peaceful world
- It brings together educators who share that aspiration
- Today, as new global challenges emerge at an unprecedented pace of change, an IB Education is more relevant and necessary than ever

# IB in the News

**FL Lawmakers propose bill that could cut funding to higher level courses like IB, AICE, AP**

<https://www.floridapolicy.org/posts/florida-lawmakers-should-preserve-funding-for-students-in-advanced-academics-and-career-and-technical-education-classes>

<https://www.publishedreporter.com/2025/04/12/state-budget-could-cut-funds-supporting-advanced-high-school-courses/>